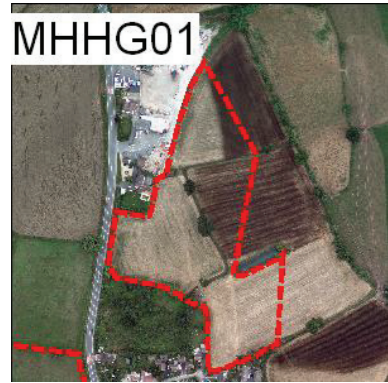


These are some possible sites... there may be others.

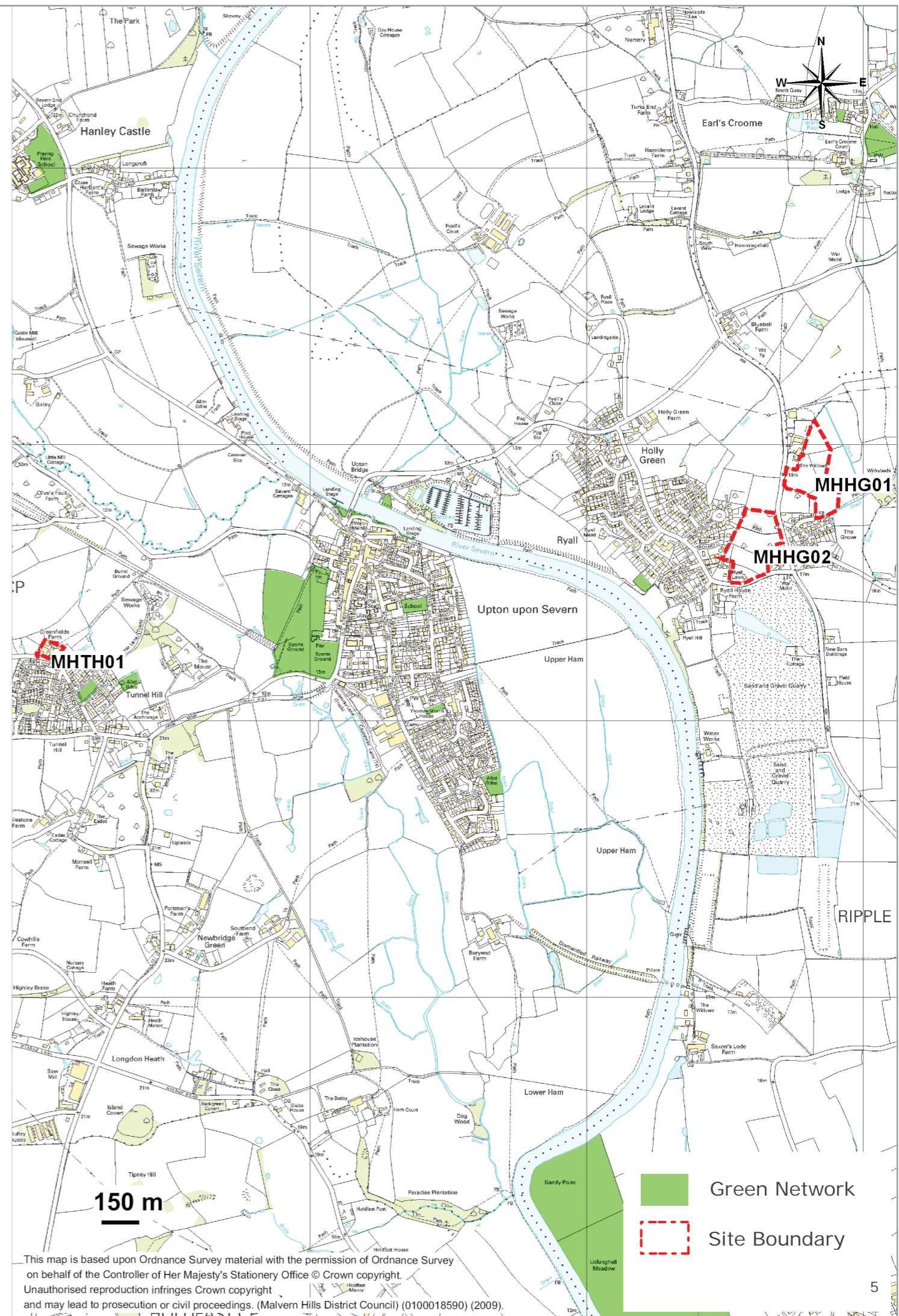
Please make your comments on the questionnaire



- MHHG01 Land East of A38, Holly Green
- MHHG02 Land East of Ryall Lawn
- MHTH01 Land at Greenfield Farm

Issues potentially affecting these sites include:

- Loss of employment opportunities;
- Use of Brownfield/Greenfield land;
- Accessibility;
- Impact on Green Spaces ;
- Existing site constraints e.g. utilities, water courses, floodplain, listed buildings, proximity to a railway or a major road network and visual sensitivity of landscape and
- Impact on wider environment of e.g. conservation areas, surrounding land uses, the visual setting of the town and linkages to the wider countryside.



This map is based upon Ordnance Survey material with the permission of Ordnance Survey on behalf of the Controller of Her Majesty's Stationery Office © Crown copyright. Unauthorised reproduction infringes Crown copyright and may lead to prosecution or civil proceedings. (Malvern Hills District Council) (0100018590) (2009).