



# WYCHAVON DISTRICT

## Tennis and Multi Use Games Areas

**JULY 2010**



Nortoft Partnerships Limited  
2 Green Lodge Barn, Nobottle, Northampton NN7 4HD  
Tel: 01604 586526 Fax: 01604 587719  
Email: [info@nortoft.co.uk](mailto:info@nortoft.co.uk) Web: [www.nortoft.co.uk](http://www.nortoft.co.uk)

## TABLE OF CONTENTS

INTRODUCTION	2
Sub Areas for the Strategy	2
Population	4
TENNIS	5
Introduction	5
Assessment – Tennis	5
Current situation	5
Standards of provision for tennis	8
Recommendations	9
Wychavon District outside the WWM-GA	9
Wychavon District within the WWM-GA	10
MULTI USE GAMES AREAS	11
Introduction	11
Assessment – Multi Use Games Areas	11
Current situation	11
Standards of provision for MUGAs	13
Recommendations	14
Wychavon District outside the WWM-GA	14
Wychavon District within the WWM-GA	15
NEXT STEPS	15

## TABLE OF FIGURES

Figure 1:	Strategy sub-areas	3
Figure 2:	Population of Wychavon 2008-2026	4
Figure 3:	Outdoor tennis sites by sub area	6
Figure 4:	All outdoor tennis sites	7
Figure 5:	Tennis- summary of needs for Wychavon District outside the WWM-GA	10
Figure 6:	Tennis- summary of needs for Wychavon District within the WWM-GA	10
Figure 7:	MUGAs by sub area	11
Figure 8:	All MUGAs	12
Figure 9:	MUGAs- summary of needs for Wychavon District outside the WWM-GA	15
Figure 10:	MUGAs- summary of needs for Wychavon District within the WWM-GA	15

## APPENDICES

APPENDIX 1:	Audit of Tennis Sites
APPENDIX 2:	Audit of Multi Use Games Areas

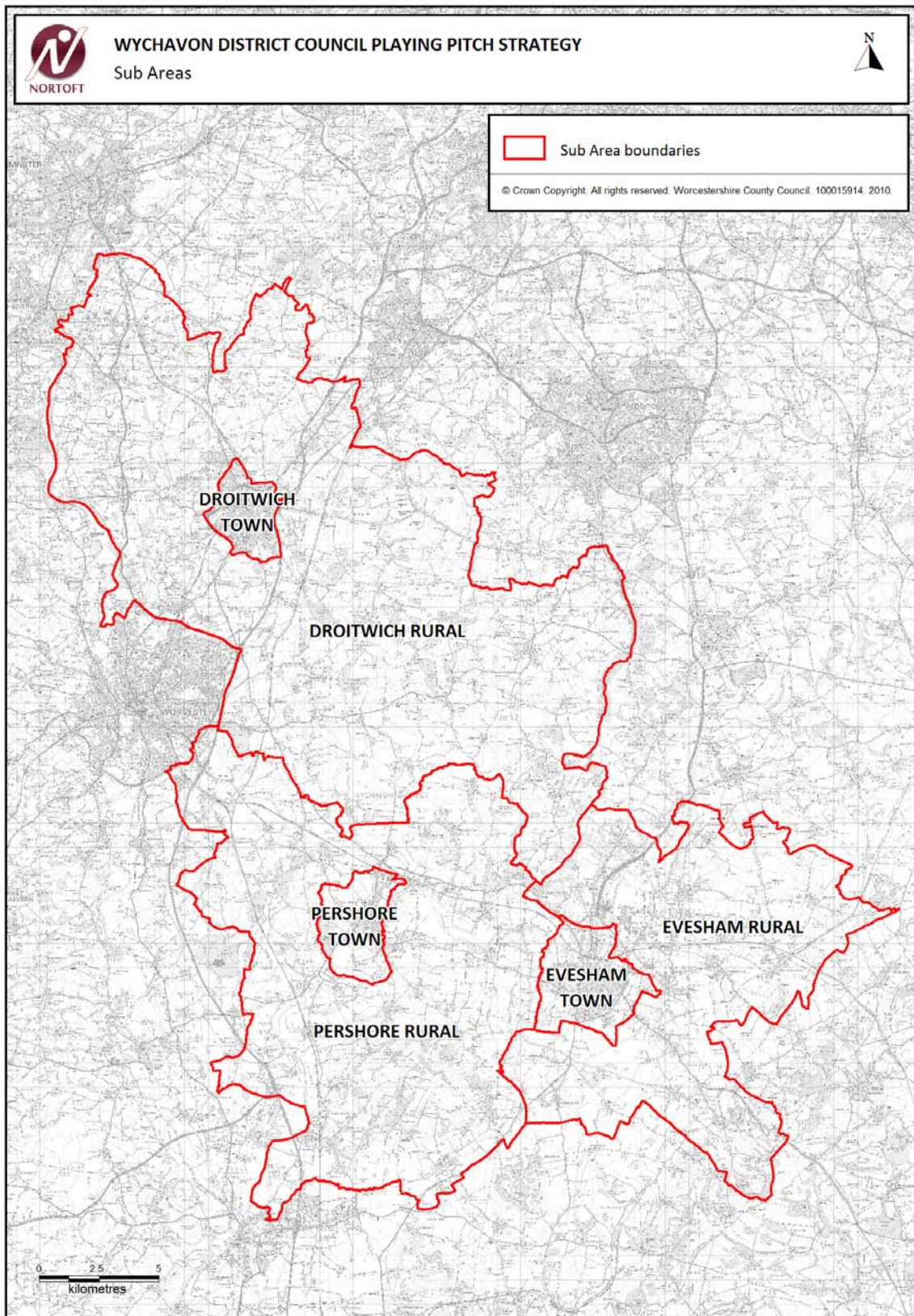
## INTRODUCTION

1. This report is an extension to the Wychavon District Playing Pitch Strategy July 2010 and considers the requirements for outdoor tennis courts and multi use games areas (MUGAs) for the period up to 2026.
2. The requirements for full size synthetic turf pitches are not dealt with in this report but are assessed separately within the Sports Partnership Herefordshire and Worcestershire Sports Facilities Framework 2010-2026 and the South Worcestershire Sports Facilities Framework 2010-2026.

### Sub Areas for the Strategy

3. For consistency this report uses the same sub areas as the playing pitch strategy. However due to the relatively small number of facilities and their geographical locations across the authority, it is not appropriate to produce standards on a sub area basis. This report therefore makes recommendations for quality, quantity and accessibility on an authority-wide basis whilst recognising that there needs to be flexibility particularly between the rural and urban areas. The sub areas are illustrated in Figure 1 below.

Figure 1: Strategy sub-areas



## Population

- The current and future populations are illustrated in Figure 2 below. The current population (2008) is taken from the ONS Middle Super Output Areas 2008 estimates (experimental series) for Wychavon. These figures exclude the growth for the WWM-GA (the growth around Worcester) which is dealt with separately in this report.

*Figure 2: Population of Wychavon 2008-2026*

	<b>2008</b>	<b>2016</b>	<b>2021</b>	<b>2026</b>
<b>Population</b>	117,600	120,700	122,100	124,300

- A more detailed analysis of the population by sub area and the methodology used to calculate the population change can be found in the population section of the main playing pitch strategy.

# TENNIS

## Introduction

6. All types of outdoor tennis court are considered in this strategy, this means outdoor courts with one of the following surface types: porous tar macadam, polymeric, synthetic turf or grass. This assessment includes dedicated tennis courts only; other sites where tennis courts exist and are overlaid with other types of courts, e.g. netball, are dealt with in the MUGAs section below.
7. The following facts are taken from the Sport England Primary Offer Data Pack for Tennis (June 2008).
  - Tennis is the 6<sup>th</sup> most played sport nationally, and attracts slightly more men than women;
  - The majority of players are from the higher socio-economic groups (NS-SEC 1-4) and the highest participation rates are among those aged 16-24;
  - 21% of tennis players are aged 16-19, this compares with 12% of all those that have taken part in any sport or active recreation;
  - 48% of tennis players have an annual household income of above £52,000 compared to 37% of all those that take part in any sport and active recreation.
8. Tennis has traditionally been very much a club based sport and any recommendations set out in this report in relation to the number and location of facilities need to be viewed in the context of sports development and club development issues.

## Assessment – Tennis

### Current situation

9. Wychavon District has a total of 63 dedicated outdoor tennis courts distributed throughout the authority area, all of which are available with secure community use. The full list of sites is available in Appendix 1. The distribution by sub area is illustrated in the table below (Figure 3).

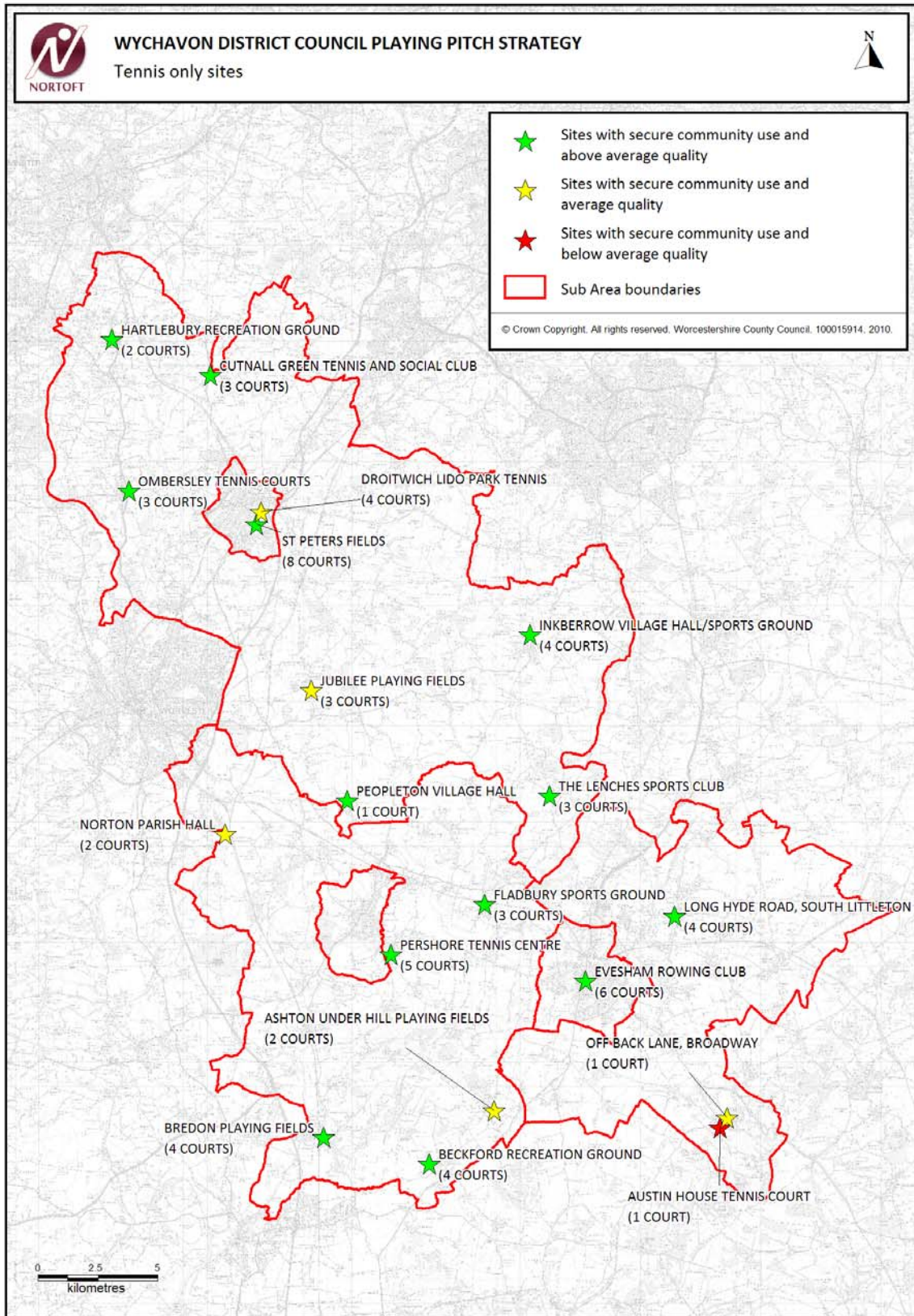
*Figure 3: Outdoor tennis sites by sub area*

	Total no. of courts	Secure community use courts
Droitwich Town	12	12
Droitwich Rural	19	19
Evesham Town	6	6
Evesham Rural	6	6
Pershore Town	0	0
Pershore Rural	20	20
<b>Total</b>	<b>63</b>	<b>63</b>

10. The map at Figure 4 shows the distribution of tennis sites and gives an indication of their quality.



Figure 4: All outdoor tennis sites





11. The current provision per 1,000 population for all tennis courts across the authority as a whole is 0.54 courts per 1,000.
12. In March 2010 officers from Wychavon District Council undertook an audit of tennis facilities in the area. The findings indicate that 50 tennis courts on 13 sites within the District are of above average quality and 12 courts on 5 sites are average quality. Only one site with a single court is below average, namely Austin House Tennis Court in Broadway.
13. The courts appear to be well distributed across the area although there are obvious gaps in provision in Pershore Town where there are no courts and only 6 courts within Evesham Town.

### Standards of provision for tennis

14. There are very few local authorities that have adopted provision standards for tennis but one of the four ONS comparator authorities to Wychavon (Babergh, Lichfield, Melton and Stratford-on-Avon) does have an adopted quantity standard. Lichfield District Council in Staffordshire has adopted a standard of 0.55 courts per 1,000 people. This is very close to the current provision standard in Wychavon (0.54 courts per 1,000). It has therefore been decided to use the current level of provision as the quantity standard which should be applied to determine future levels of provision.

### Standards for quantity

15. Recommended standards for quantity have been calculated based on the current provision and, as agreed in the playing pitch strategy and sports facilities strategy, a 1% increase in participation is added per annum up to 2026.

**The recommended standard of provision (at 2026) is therefore the current provision (0.54) x 117% i.e. 0.63 courts per 1,000 population**

16. Within the WWM-GA the standard for tennis courts has been calculated based on the current provision for Worcester which is 0.27 courts per 1,000, this is because the population of this area is likely to be more similar (in terms of demographic profile) to that of Worcester than that of Wychavon.

**The recommended standard of provision (at 2026) is therefore the current provision (0.27) x 117% i.e. 0.32 courts per 1,000 population**

## Standards for quality

17. All sites should be well located in safe and secure areas with good access and ancillary facilities such as changing and parking. Facilities should be floodlit, where possible, to enable use during the evenings and in the winter months. The playing surfaces should be of high quality with clear markings and run-off space. New facilities should be constructed in accordance with national guidance from the LTA, Sport England and SAPCA.

## Standards for accessibility

18. Sport England research has identified that the optimum travel time to most major facilities i.e. Leisure Centres and swimming pools is 20 minutes either on foot or by car. Anecdotal evidence suggests that tennis facilities are often considered more local and therefore it is suggested that a 15 minute travel time is used. This should be a drive time in the rural areas (it is not necessarily appropriate to have tennis courts in every village) but a travel time on foot in urban areas.

**All residents of the district should be able to access a tennis site within 15 minutes walk within the urban area or 15 minutes drive within the rural area.**

## Recommendations

### Wychavon District outside the WWM-GA

19. The population of Wychavon (excluding the growth around Worcester) is projected to increase up to 2026 and therefore new facilities can be justified based on increases in the population. Adding also the increase in participation of 1% per annum, this will also increase the need for facilities.
20. Within the urban sub areas of Droitwich Town, Evesham Town and Pershore Town there are 12, 6 and 0 tennis courts respectively. Although Pershore Town currently has no provision, the Pershore Tennis Centre with 5 courts is located just on the boundary of the sub area. The highest number of courts are found in the Pershore Rural (20 courts) and Droitwich Rural (19 courts) sub areas.
21. Discussions with the LTA have indicated that in areas where there is no tennis activity they would normally work with the local authority to try and generate demand based on an existing municipal court. Positive planning policies should therefore be established which would support proposals for new provision both in the urban and rural areas where demand can be identified.
22. Based on the standards for 2026 identified above, Figure 5 below shows the summary of needs for tennis. This indicates a need for a further 15 new courts by 2026.

Figure 5: Tennis- summary of needs for Wychavon District outside the WWM-GA

	Current		2026	
	Current Population	Number of courts	Projected Population	Number of courts required
Wychavon District	117,600	63	124,300	78 (15 new courts)

### Wychavon District within the WWM-GA

23. In order to determine the likely level of provision required a simple calculation has been used based on the housing projections and using the proposed provision per 1,000. The Worcester South/Norton, Kilbury Drive and Bevere SUEs will generate the need for new tennis facilities. The table below (Figure 6) shows the number of courts that would be needed in 2026 based on a provision standard of 0.32 courts per 1,000 population. The table shows the actual results of the calculations but when planning the number of courts to be delivered, other local factors and sports development issues will need to be taken into consideration.

Figure 6: Tennis- summary of needs for Wychavon District within the WWM-GA

	2026	
	Anticipated Population	Number of courts required
Worcester South/Norton	720	0.23
Kilbury Drive	720	0.23
Bevere	960	0.31

## MULTI USE GAMES AREAS

### Introduction

24. For the purposes of this strategy, Multi Use Games Areas (MUGAs) are identified as fenced, outdoor court sites where more than one sport is marked out and played on a surface. The sports typically played on MUGA sites are basketball, five-a-side football, netball and tennis. The facilities may have permanent or removable goals and hoops as well as floodlighting. These surfaces are all of artificial construction such as porous tar macadam, polymeric or synthetic turf.
25. It is important to understand that this assessment includes the traditional MUGA which is mainly used by older children on a casual basis as well as standard multi-purpose courts aimed at all users. Due to the number of different sports courts overlaid on each other this assessment deals with the **sites as a whole** rather than the number of courts on each site. A full list of the courts at each site is available in Appendix 2.

### Assessment – Multi Use Games Areas

#### Current situation

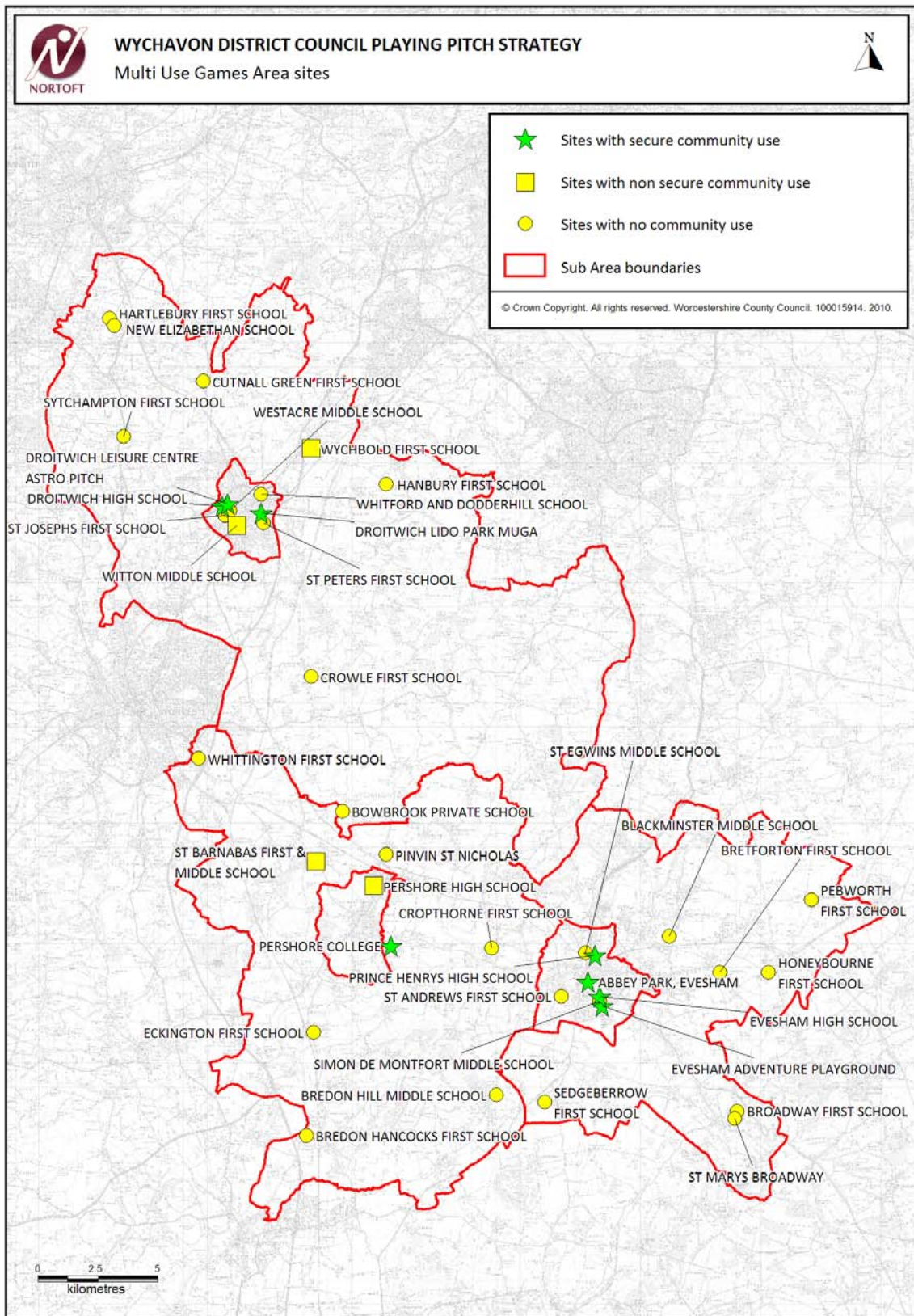
26. Wychavon District has a total of 39 MUGAs, only 8 of which are available with secure community use. The distribution by sub area is illustrated in the table below (Figure 7).

*Figure 7: MUGAs by sub area*

	Total no. of sites	Secure community use sites
Droitwich Town	8	3
Droitwich Rural	8	0
Evesham Town	7	4
Evesham Rural	7	0
Pershore Town	1	0
Pershore Rural	8	1
<b>Total</b>	<b>39</b>	<b>8</b>

27. The map at Figure 8 shows all the MUGAs in the district and their availability to the community.

Figure 8: All MUGAs





28. The provision per 1,000 population for secure community use MUGAs across the authority as a whole is currently 0.07 per 1,000.
29. These MUGAs are all located within the urban sub areas or immediately adjacent in the case of Pershore College. There is a good spread of other MUGAs across the whole district however these are not available securely to the community.

### Standards of provision for MUGAs

30. There are very few local authorities that have adopted provision standards for MUGAs and none of the four ONS comparator authorities to Wychavon (Babergh, Lichfield, Melton and Stratford-on-Avon) have standards. Some local authorities have standards for youth 5-a-side MUGAs based on play standards, however it is not possible to use these as a benchmark as this assessment includes **all** multi-sport courts. The current provision is therefore taken forward as the quantity standard applied to future provision.

### Standards for quantity

31. Recommended standards for quantity are calculated on the current provision and as agreed in the playing pitch strategy and sports facilities strategy, a 1% increase in participation is added per annum up to 2026.

**The recommended standard of provision (at 2026) is therefore the current provision (0.07) x 117% i.e. 0.08 MUGAs per 1,000 population**

32. Within the WWM-GA the standard for MUGAs has been calculated based on the current provision for Worcester, which is currently 0.13 per 1,000. This is because the population of these areas are urban extensions to Worcester and the population profile will be closer to that of the existing city rather than that of Wychavon.

33. With the 1% increase in participation per annum added, the standard for the WWM-GA is the current provision (0.13) x 117% :

**The recommended standard of provision (at 2026) is therefore the current provision (0.13) x 117% i.e. 0.15 MUGAs per 1,000 population**

34. New facilities should be developed with a mixture of ball courts marked out, this should be determined by an analysis of local sports development priorities and/or club development.
35. However, particularly in the case of the traditional fenced ball court MUGA for youths, a standard like this may not be appropriate. It may be more appropriate to locate new facilities in neighbourhoods where they are likely to be needed and any new proposals should be worked up with the involvement of community youth groups.

### Standard for quality

36. All sites should be well located in safe and secure areas with good access and ancillary facilities such as changing and parking (where appropriate). Facilities should be floodlit where possible to enable use during the evenings in the winter months. The playing surfaces should be of high quality with clear markings and run-off space. New facilities should be constructed in accordance with national guidance from Sport England and SAPCA.

### Standard for accessibility

37. Sport England research has identified that the optimum travel time to most major facilities as being 20 minutes. This study recognises that some facilities are considered more “local” e.g. tennis and has suggested a 15 minute travel time. MUGAS are often primarily used by young people and hence there is a justification for an even shorter walking travel time in order to make them more accessible.
38. All residents of the district should be able to access a MUGA within 10 minutes walk within the urban area or 15 minutes drive within the rural area.

## Recommendations

### Wychavon District outside the WWM-GA

39. The population of Wychavon District (excluding the growth around Worcester) is projected to increase up to 2026 and therefore new facilities can be justified based on increases in population alone. Adding also the increase in participation of 1% per annum, this will also increase the need for facilities.
40. The district is not well provided for in terms of MUGAs with the three of the sub areas having no facilities with secure community use. The rural areas of the district in particular are not well provided for but it is more important that new facilities are built when the need arises and can be linked with clubs. Opportunities should therefore be taken to develop further sites where a local need can be identified. As there are also high numbers of MUGAs that are currently not available for community use, their use for the community should be secured where possible.
41. Based on the standards for 2026 identified above, Figure 9 below shows the summary of needs for MUGAs. This indicates a need for a further 2 new sites by 2026.

Figure 9: MUGAs- summary of needs for Wychavon District outside the WWM-GA

	Current		2026	
	Current Population	Number of sites	Projected Population	Number of sites required
Wychavon	117,600	8	124,300	10 (2 new sites)

### Wychavon District within the WWM-GA

42. The Worcester South/Norton, Kilbury Drive and Bevere SUEs will generate the need for new MUGAs based on the quantity standards identified above. If these are to be provided on new secondary school sites, community use should be secured at the outset. A summary of the needs are provided in the table below (Figure 10).

Figure 10: MUGAs- summary of needs for Wychavon District within the WWM-GA

	2026	
	Anticipated Population	Number of sites required
Worcester South/Norton	720	0.11
Kilbury Drive	720	0.11
Bevere	960	0.14

### NEXT STEPS

43. The emerging recommendations for the WWM-GA form part of the infrastructure lists for the Programme of Development.
44. This report is part of the South Worcestershire Sports Facilities Strategy and the recommended standards within it form part of the evidence base for the South Worcestershire Joint Core Strategy.

# **APPENDIX 1**

## **Audit of Tennis Sites**

APPENDIX 1: Audit of Tennis Sites

Site Name	Site Comments	Road name, Settle	X	Y	Sub Area	Community Use	Community Use Category
Ashton Under Hill Playing Fields		Elmley Road, Evesham	399900	238000	Pershore Rural	Yes	A
Austin House Tennis Court		Church Street, Broadway	409300	237300	Evesham Rural	Yes	A
Beckford Recreation Ground		Main street, Beckford,	397200	235800	Pershore Rural	Yes	A
Bredon Playing Fields		Kemerton Road, Bredon, Evesham	392800	236900	Pershore Rural	Yes	A
Cutnall Green Tennis and Social Club		Addis Lane, Cutnall Green,	388100	268600	Droitwich Rural	Yes	B1
Evesham Rowing Club		Abbey Road, Evesham	403700	243400	Evesham Town	Yes	B1
Fladbury Sports Ground		Station Road, Fladbury, Evesham	399500	246600	Pershore Rural	Yes	A
Hartlebury Recreation Ground		Waresley Court	384000	270100	Droitwich Rural	Yes	A
Inkberrow Village Hall/Sports Ground		Sands Road, Inkberrow,	401400	257800	Droitwich Rural	Yes	A
Jubilee Playing Fields		Church Road, Crowle, Worcs	392300	255500	Droitwich Rural	Yes	A



APPENDIX 1: Audit of Tennis Sites

Site Name	Site Owned by	MUGA/tennis: surface grass	MUGA: clay	MUGA: porous tarmac	MUGA: polymeric surface	MUGA: synthetic sand	MUGA: synthetic needle punch	Mainly used for: tennis	Mainly used for: netball	Mainly used for: hockey	Mainly used for: basketball	Mainly used for: 5-a-side
Ashton Under Hill Playing Fields	Parish Council											
Austin House Tennis Court	Parish Council											
Beckford Recreation Ground	Beckford Community Council											
Bredon Playing Fields	Parish Council											
Cutnall Green Tennis and Social Club	Leased from Parish Council											
Evesham Rowing Club	Lease from Rudge States											
Fladbury Sports Ground	Parish Council											
Hartlebury Recreation Ground	Parish Council											
Inkberrow Village Hall/Sports Ground	Private Lease											
Jubilee Playing Fields	Parish Council											

APPENDIX 1: Audit of Tennis Sites

Site Name	Mainly used for: rugby	No. tennis courts	No. netball courts	No. hockey pitches	No. 5-a-side football	No. rugby	Rebound walls: Y/N	Pavilion Facilities	Has Floodlights	Match Floodlights	Pitches Quality	Changing Room Quality (for community)	Shower Quality (for community)
Ashton Under Hill Playing Fields		2						N	N	N	Average	None	None
Austin House Tennis Court		1					N	N	N	N	Below Average	None	None
Beckford Recreation Ground		4						Y	Y	Y	Good	Good	Good
Bredon Playing Fields		4						Y	Y	Y	Good	Good	Good
Cutnall Green Tennis and Social Club		3						Y	Y	Y	Good	Average	Average
Evesham Rowing Club		6						Y	Y	Y	Good	Average	Average
Fladbury Sports Ground		3							Y	Y	Good	Average	Average
Hartlebury Recreation Ground		2						N	N	N	Good	None	None
Inkberrow Village Hall/Sports Ground		4						Y	Y	Y	Above Average	Average	Average
Jubilee Playing Fields		3						Village Hall	Village Hall	No	Average		

APPENDIX 1: Audit of Tennis Sites

Site Name	Car Park Quality	Fencing Quality	Community Additional Details	Comments
Ashton Under Hill Playing Fields	Good			
Austin House Tennis Court	Average	Average		
Beckford Recreation Ground	Good	Good		
Bredon Playing Fields	Good	Good		Bowls green on site as well
Cutnall Green Tennis and Social Club	Average	Above Average		
Evesham Rowing Club	Average	Good		
Fladbury Sports Ground	Average	Good		
Hartlebury Recreation Ground	Average	Good		
Inkberrow Village Hall/Sports Ground	Above Average	Good		
Jubilee Playing Fields	Below Average			

APPENDIX 1: Audit of Tennis Sites

Site Name	Site Comments	Road name, Settle	X	Y	Sub Area	Community Use	Community Use Category
Long Hyde Road, South Littleton		Long Hyde Road, South Littleton, Evesham	407400	246100	Evesham Rural	Yes	A
Norton Parish Hall		Norton Parish Hall, Littleworth	388700	249500	Pershore Rural	Yes	A
Off Back Lane, Broadway		Back Lane, Broadway	409600	237700	Evesham Rural	Yes	A
Ombersley Tennis Courts		School bank, Ombersley	384700	263800	Droitwich Rural	Yes	B1
Peopleton Village Hall		Peopleton, Pershore	393800	250900	Droitwich Rural	Yes	A
Pershore Tennis Centre		Avon Bank, Pershore	395600	244500	Pershore Rural	Yes	B1
St Peters Fields - located next to St Peters Church		Church Lane, Droitwich	390000	262400	Droitwich Town	Yes	A
The Lenches Sports Club		Ab Lench Road, Church Lane	402200	251100	Droitwich Rural	Yes	B1
Droitwich Lido Park Tennis		Lido Park, Droitwich Spa	390200	262900	Droitwich Town	Yes	A

APPENDIX 1: Audit of Tennis Sites

Site Name	Site Owned by	MUGA/tennis: surface grass	MUGA: clay	MUGA: porous tarmac	MUGA: polymeric surface	MUGA: synthetic sand	MUGA: synthetic needle punch	Mainly used for: tennis	Mainly used for: netball	Mainly used for: hockey	Mainly used for: basketball	Mainly used for: 5-a-side
Long Hyde Road, South Littleton	Parish Council											
Norton Parish Hall	Parish Hall											
Off Back Lane, Broadway	Parish Council											
Ombersley Tennis Courts	Ombersley Tennis Club											
Peopleton Village Hall	Parish Council											
Persnore Tennis Centre	Persnore College Leased to the Persnore Tennis Centre											
St Peters Fields - located next to St Peters Church	Wychavon District Council											
The Lenches Sports Club	Club Owned											
Droitwich Lido Park Tennis	Wychavon District Council											



APPENDIX 1: Audit of Tennis Sites

Site Name	Mainly used for: rugby	No. tennis courts	No. netball courts	No. hockey pitches	No. 5-a-side football	No. rugby	Rebound walls: Y/N	Pavilion Facilities	Has Floodlights	Match Floodlights	Pitches Quality	Changing Room Quality (for community)	Shower Quality (for community)
Long Hyde Road, South Littleton		4					Y	Y	Y		Good	Good	Good
Norton Parish Hall		2					Village Hall	N	N		Average	Average	Average
Off Back Lane, Broadway		1									Average		
Ombersley Tennis Courts		3					Y	Y	Y		Good	Good	Good
Peopleton Village Hall		1					Y	N	N		Good	Average	Average
Pershore Tennis Centre		5					Y	Y	Y		Above Average	Above Average	Above Average
St Peters Fields - located next to St Peters Church		8						Y	Y		Good		
The Lenches Sports Club		3					Y	Y	Y		Good	Good	Good
Droitwich Lido Park Tennis		4					N	N	N		Average	None	None

APPENDIX 1: Audit of Tennis Sites

Site Name	Car Park Quality	Fencing Quality	Community Additional Details	Comments
Long Hyde Road, South Littleton	Good	Good		
Norton Parish Hall	Good	Good		Also a small basketball court with ring
Off Back Lane, Broadway				
Ombersley Tennis Courts	Average	Good		
Peopleton Village Hall	Good	Good		
Persnore Tennis Centre	Above Average	Above Average		There are also 3 indoor courts
St Peters Fields - located next to St Peters Church		Good		
The Lenches Sports Club	Good	Good		
Droitwich Lido Park Tennis	Average	Average		

# **APPENDIX 2**

## **Audit of Multi Use Games Areas**

APPENDIX 2: Audit of Multi Use Games Areas

Site Name	Road name, Settle	X	Y	Sub Area	Community Use	Community Use Category
Abbey Park, Evesham	Abbey Park, Evesham	403800	243400	Evesham Town	Yes	A
Blackminster Middle School	Station Road, South Littleton	407200	245300	Evesham Rural	No	C
Bowbrook Private School	Peopleton, Pershore	393600	250500	Droitwich Rural	NO	C
Bredon Hancocks First School	Church Street, Bredon	392100	237000	Pershore Rural	No	C
Bredon Hill Middle School	Elmley Road, Ashton Under Hill	400000	238700	Pershore Rural	No	C
Bretforton First School	New Street, Bretforton	409300	243800	Evesham Rural	No	C
Broadway First School	Lime Tree Avenue,	410000	238000	Evesham Rural	No	C
Cropton First School	Main Street, Cropton	399800	244800	Pershore Rural	No	C
Crowle First School	Crowle, Worcester	392300	256100	Droitwich Rural	No	C







APPENDIX 2: Audit of Multi Use Games Areas

Site Name	Comments
Abbey Park, Evesham	Also Marked out for Basketball
Blackminster Middle School	Tennis and netball marked out on same court - playground. Unclear if full size. No formal dual use agreement
Bowbrook Private School	Tennis and 5 a side football are on the same area. Netball on the playground
Bredon Hancocks First School	Marked up on playground, not full size, no formal dual use agreement
Bredon Hill Middle School	Marked up on same area - playground. Unclear if full size. No formal dual use agreement
Bretforton First School	Marked up on playground - not full size. No formal dual use agreement
Broadway First School	Marked up on the playground Not full size. No formal dual use agreement
Crophorne First School	Marked up on playground - not full size. No formal dual use agreement
Crowle First School	Marked up on the playground Not full size. No formal dual use agreement

APPENDIX 2: Audit of Multi Use Games Areas

Site Name	Road name, Settle	X	Y	Sub Area	Community Use	Community Use Category
Cutnall Green Firt School	School Road, Cutnall Green	387800	268400	Droitwich Rural	No	C
Droitwich High School	Briar Mill, Droitwich	388600	263200	Droitwich Town	Yes	B1
Droitwich Leisure Centre - Astro Pitch	Briar Mill, Droitwich	388800	263300	Droitwich Town	Yes	A
Droitwich Lido Park MUGA	Lido Park, Droitwich Spa	390200	262900	Droitwich Town	Yes	A
Eckington First School	School Lane, Eckington	392400	241300	Pershore Rural	No	C
Evesham Adventure Playground	Woodlands, Evesham	404400	242400	Evesham Town	Yes	A
Evesham High School	Four Pools Road, Evesham	404300	242800	Evesham Town	Yes	B1
Hanbury First School	School Road, Hanbury, Worcs,	395400	264100	Droitwich Rural	No	C
Hartlebury First School	The Village, Hartlebury,	383900	271000	Droitwich Rural	No	C



APPENDIX 2: Audit of Multi Use Games Areas

Site Name	Mainly used for: rugby	No. tennis courts	No. netball courts	No. hockey pitches	No. 5-a-side football	No. rugby	Rebound walls: Y/N	Pavilion Facilities	Has Floodlights	Match Floodlights	Pitches Quality	Changing Room Quality (for community)	Shower Quality (for community)	Car Park Quality	Fencing Quality	Community Additional Details
Cutnall Green Firt School			1					N	N	N		N	N			
Droitwich High School		6	5													
Droitwich Leisure Centre - Astro Pitch				1				Y	Y	Y	Aver	Average	Average	Below	Average	
Droitwich Lido Park MUGA					1			N	N	N	Aver	None	None	Aver	Average	
Eckington First School			2					N	N	N		N	N			
Evesham Adventure Playground							N	N	N	N	Good	None	None	Below	Good	
Evesham High School		3		1												
Hanbury First School			1					N	N	N		N	N			
Hartlebury First School			1					N	N	N		None	None		N	

APPENDIX 2: Audit of Multi Use Games Areas

Site Name	Comments
Cutnall Green Firt School	Marked up on the playground Not full size. No formal dual use agreement
Droitwich High School	Marked up on the same area
Droitwich Leisure Centre - Astro Pitch	Also marked up for junior hockey
Droitwich Lido Park MUGA	
Eckington First School	Marked up on the playground Not full size. No formal dual use agreement
Evesham Adventure Playground	
Evesham High School	Netball and Tennis Courts marked out on same area. 2 x mini tennis
Hanbury First School	Marked up on the playground. Not full size. No formal dual use agreement
Hartlebury First School	Marked up on the playground. Not full size. No formal dual use agreement

APPENDIX 2: Audit of Multi Use Games Areas

Site Name	Road name, Settle	X	Y	Sub Area	Community Use	Community Use Category
Honeybourne First School	School Street, Honeybourne	411300	243800	Evesham Rural	No	C
New Elizabethan School	Quarry Bank, Hartlebury,	384100	270700	Droitwich Rural	No	C
Pebworth First School	Back Lane, Pebworth	413100	246800	Evesham Rural	No	C
Pershore College	Avon Bank, Pershore	395600	244900	Pershore Rural	Yes	B1
Pershore High School	Station Road, Pershore	394900	247400	Pershore Town	Yes	B2
Pinvin St Nicholas	Pinvin, Pershore	395400	248700	Pershore Rural	No	C
Prince Henrys High School	Victoria Avenue, Evesham	404100	244500	Evesham Town	Yes	B1
Sedgeberrow First School	Main Street, Sedgeberrow	402000	238400	Evesham Rural	No	C
Simon De Montfort Middle School	Four Pools Lane, Evesham	404300	242600	Evesham Town	No	C
St Andrews First School	Marymans Road, Hampton,	402700	242800	Evesham Town	No	C

APPENDIX 2: Audit of Multi Use Games Areas

Site Name	Site Owned by	MUGA/tennis: surface grass	MUGA: clay	MUGA: porous tarmac	MUGA: polymeric surface	MUGA: synthetic sand	MUGA: synthetic needle punch	Mainly used for: tennis	Mainly used for: netball	Mainly used for: hockey	Mainly used for: basketball	Mainly used for: 5-a-side
Honeybourne First School	Worcestershire County Council											
New Elizabethan School	Private											
Pebworth First School	Worcestershire County Council											
Persore College	Persore College											
Persore High School	Worcestershire County Council											
Pinvin St Nicholas	Worcestershire County Council											
Prince Henrys High School	Worcestershire County Council											
Sedgeberrow First School	Worcestershire County Council											
Simon De Montfort Middle School	Worcestershire County Council											
St Andrews First School	Worcestershire County Council											



APPENDIX 2: Audit of Multi Use Games Areas

Site Name	Mainly used for: rugby	No. tennis courts	No. netball courts	No. hockey pitches	No. 5-a-side football	No. rugby	Rebound walls: Y/N	Pavilion Facilities	Has Floodlights	Match Floodlights	Pitches Quality	Changing Room Quality (for community)	Shower Quality (for community)	Car Park Quality	Fencing Quality	Community Additional Details
Honeybourne First School			1					N	N	N		N	N			
New Elizabethan School		2	1					N	N	N		N	N			
Pebworth First School			1					N	N	N		N	N			
Pershore College		2	2		2			N	N	N	Average	None	None	Good	Average	
Pershore High School		4	3													
Pinvin St Nicholas		2	1					N	N	N		N	N			
Prince Henrys High School		5	3	1				N	N	N		N	N			
Sedgeberrow First School			1					N	N	N		N	N			
Simon De Montfort Middle School		3	2					N	N	N		N	N			
St Andrews First School			1					N	N	N		N	N			

APPENDIX 2: Audit of Multi Use Games Areas

Site Name	Comments
Honeybourne First School	Marked up on the playground Not full size. No formal dual use agreement
New Elizabethan School	
Pebworth First School	Marked up on the playground Not full size. No formal dual use agreement
Pershore College	All courts and football pitches are on the same tarmac area
Pershore High School	Tennis and Netball marked up on the same area. No formal dual use agreement
Pinvin St Nicholas	Marked up on same area - playground. Unclear if full size. No formal dual use agreement
Prince Henrys High School	Hockey and 5 a side football marked up on same area. 4 tennis and 3 netball also marked on the same area
Sedgeberrow First School	Marked up on the playground - not full size. No formal dual use agreement
Simon De Montfort Middle School	Marked up on the same area - playground. Unclear whether full size. No formal dual use agreement
St Andrews First School	Courts marked up on the same area - playground - not full sized. No formal dual use agreement

APPENDIX 2: Audit of Multi Use Games Areas

Site Name	Road name, Settle	X	Y	Sub Area	Community Use	Community Use Category
St Barnabas First & Middle School	Stonebow Road, Drakes	392500	248400	Pershore Rural	Yes	B2
St Egwins Middle School	Worcester Road, Evesham	403700	244600	Evesham Town	No	C
St Josephs First School	Omersley Way, Droitwich	388700	262800	Droitwich Town	No	C
St Marys Broadway	Leamington Road, Broadway	409900	237700	Evesham Rural	No	C
St Peters First School	Church Lane, Droitwich	390300	262500	Droitwich Town	No	C
Sytchampton First School	Sytchampton, Stourport on	384500	266100	Droitwich Rural	No	C
Westacre Middle School	Omersley Way, Droitwich	388900	263000	Droitwich Town	No	C
Whitford and Dodderhill school	Crutch Lane, Dodderhill,	390200	263700	Droitwich Town	No	C
Whittington First School	Whittington, Worcs , WR5	387600	252700	Pershore Rural	No	C
Witton Middle School	Old Coach Road, Droitwich	389200	262400	Droitwich Town	Yes	B2

APPENDIX 2: Audit of Multi Use Games Areas

Site Name	Site Owned by	MUGA/tennis: surface grass	MUGA: clay	MUGA: porous tarmac	MUGA: polymeric surface	MUGA: synthetic sand	MUGA: synthetic needle punch	Mainly used for: tennis	Mainly used for: netball	Mainly used for: hockey	Mainly used for: basketball	Mainly used for: 5-a-side
St Barnabas First & Middle School	Worcestershire County Council											
St Egwins Middle School	Worcestershire County Council											
St Josephs First School	Worcestershire County Council											
St Marys Broadway	Worcestershire County Council											
St Peters First School	Worcestershire County Council											
Sytchampton First School	Worcestershire County Council											
Westacre Middle School	Worcestershire County Council											
Whitford and Dodderhill school	Private											
Whittington First School	Worcestershire County Council											
Witton Middle School	Worcestershire County Council											

APPENDIX 2: Audit of Multi Use Games Areas

Site Name	Mainly used for: rugby	No. tennis courts	No. netball courts	No. hockey pitches	No. 5-a-side football	No. rugby	Rebound walls: Y/N	Pavilion Facilities	Has Floodlights	Match Floodlights	Pitches Quality	Changing Room Quality (for community)	Shower Quality (for community)	Car Park Quality	Fencing Quality	Community Additional Details
St Barnabas First & Middle School			1					N	N	N		N	N			
St Egwins Middle School			3					N	N	N		N	N			
St Josephs First School			2					N	N	N		N	N			
St Marys Broadway			1					N	N	N		N	N			
St Peters First School			1					N	N	N		N	N			
Sytchampton First School			1					N	N	N		N	N			
Westacre Middle School			4					N	N	N		N	N			
Whitford and Dodderhill school		2	2					N	N	N		N	N			
Whittington First School			1					N	N	N		N	N			
Witton Middle School		3	3					N	N	N		N	N			

APPENDIX 2: Audit of Multi Use Games Areas

Site Name	Comments
St Barnabas First & Middle School	Marked up on the playground, unclear if full size, No formal Dual Use Agreement
St Egwins Middle School	One court used as parking. No formal dual use agreement
St Josephs First School	Marked up on the playground. Not full size. No formal dual use agreement
St Marys Broadway	Marked up on the playground. Not full size. No formal dual use agreement
St Peters First School	Marked up on the playground. Not full size. No formal dual use agreement
Sytchampton First School	Marked up on the playground. Not full size. No formal dual use agreement
Westacre Middle School	Marked up on the playground. Not full size. No formal dual use agreement
Whitford and Dodderhill school	Marked up on the playground. Not full size. No formal dual use agreement
Whittington First School	Marked up on the playground. Not full size. No formal dual use agreement
Witton Middle School	Marked up on the playground. Unsure whether full size. No formal dual use agreement

APPENDIX 2: Audit of Multi Use Games Areas

Site Name	Road name, Settle	X	Y	Sub Area	Community Use	Community Use Category
Wychbold First School	School Road, Wychbold	392300	265600	Droitwich Rural	Yes	B2

APPENDIX 2: Audit of Multi Use Games Areas

Site Name	Site Owned by	MUGA/tennis: surface grass	MUGA: clay	MUGA: porous tarmac	MUGA: polymeric surface	MUGA: synthetic sand	MUGA: synthetic needle punch	Mainly used for: tennis	Mainly used for: netball	Mainly used for: hockey	Mainly used for: basketball	Mainly used for: 5-a-side
Wychbold First School	Worcestershire County Council											



APPENDIX 2: Audit of Multi Use Games Areas

Site Name	Mainly used for: rugby	No. tennis courts	No. netball courts	No. hockey pitches	No. 5-a-side football	No. rugby	Rebound walls: Y/N	Pavilion Facilities	Has Floodlights	Match Floodlights	Pitches Quality	Changing Room Quality (for community)	Shower Quality (for community)	Car Park Quality	Fencing Quality	Community Additional Details
Wychbold First School							N	N	N		N	N				

APPENDIX 2: Audit of Multi Use Games Areas

Site Name	Comments
Wychbold First School	